

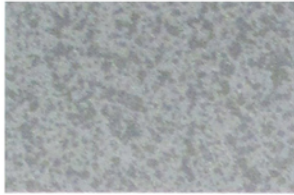
PBR Panel

26 Gauge AZ50 Galvalume

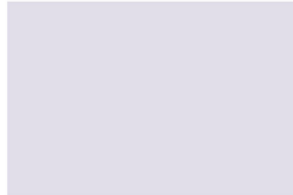


valspar®

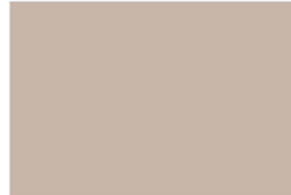
WeatherXL™



*Galvalume



*Bright White (WH)



Light Stone (LS)



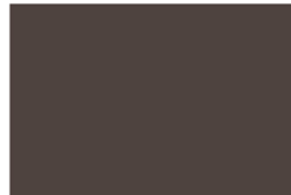
Ash Gray (AG)



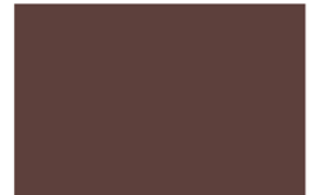
Clay (CL)



Charcoal (CH)



Bronze (BZ)



Brown (BN)



Evergreen (EG)



Slate Blue (SB)



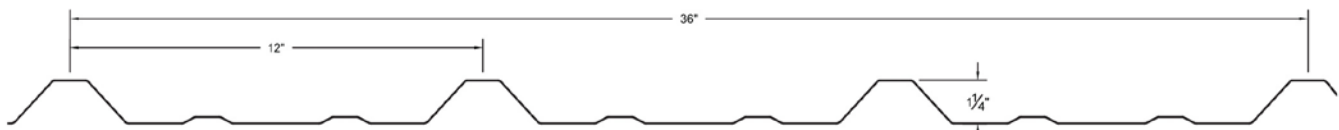
Barn Red (RD)



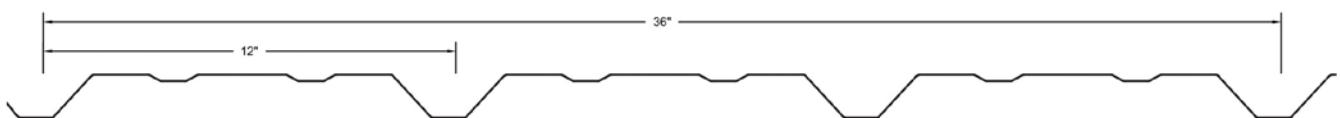
Burgundy (BU)

*Bright White and Galvalume are also available in 24 gauge.

PBR Panel Profile (PBRcc)

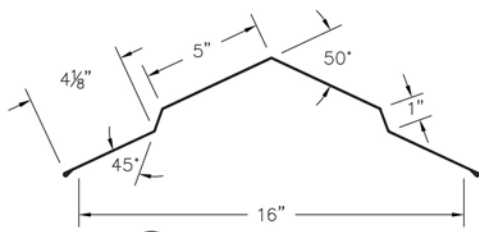


A Panel Profile (PAcc)

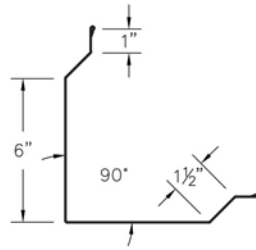


What is the difference between PBR Panel, R Panel, and the A Panel?

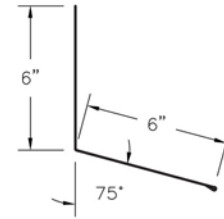
The PBR stands for Purlin-Bearing Leg and refers to the approximately 1" additional metal width that rests on the purlin for added support. The R panel starts out approximately 1" narrower and does not have the extra purlin-bearing leg. The A Panel is practically identical to the PBR panel, but in reverse. The paint is on the opposite side and is meant to be installed upside-down, relatively speaking. The A Panel is used more frequently as siding for commercial and industrial steel framed structures.



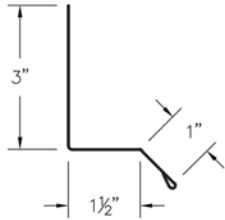
34 20° Ridge Cap (CP20cc)



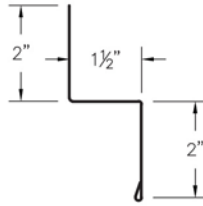
56 PBR Outside Corner (PBRRCcc)



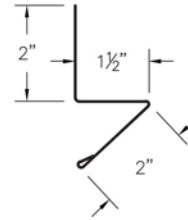
11 Universal Endwall (PBREWcc)



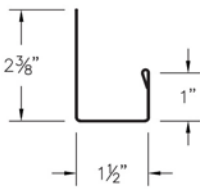
51 PBR Drip Cap (PBRDCcc)



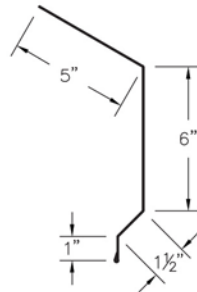
53 PBR Double Angle (PBRDAcc)



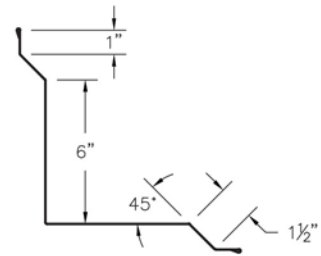
54 PBR Base Angle (PBRBAcc)



55 PBR J Channel (PBRJcc)

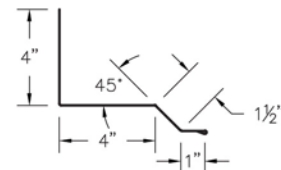
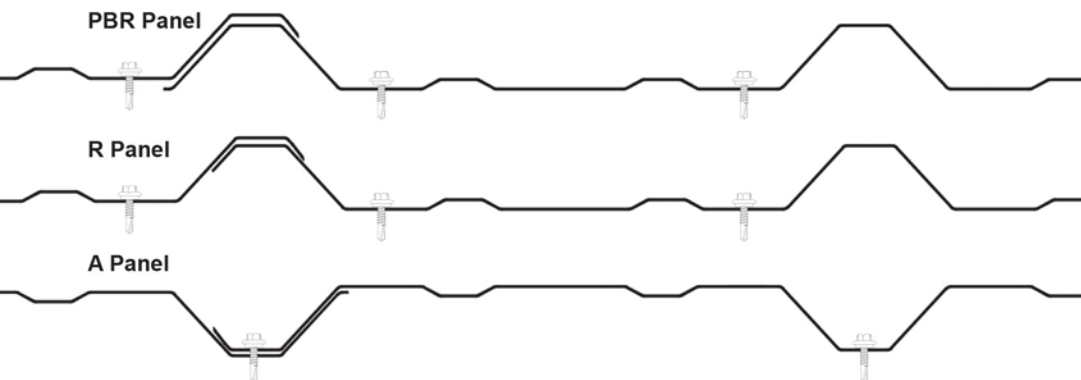


57 PBR Fascia Trim (PBRFTcc)



58 PBR Inside Corner (PBRICcc)

Proper Overlap and Screw Pattern



52 PBR Universal Sidewall (PBRSWcc)

82 Garden Spot Rd,
Ephrata PA, 17522
Office: 717-445-6885
Toll Free: 800-373-3703

www.abmartin.net
sales@abmartin.net

35 Ridge Rd,
Newville, PA 17241
Office: 717-776-5951
Toll Free: 800-782-2712