

Installation Instructions for Public Work Stand and Floor Pump Manual 31110 Rev G

Parallel Wall or object Setbacks:

Both sides of the Public Work Stand should be at least 48" from walls or other obstructions. The back of the Public Work Stand should be 12" from wall. The Public Work Stand should not protrude into a bike lane, walkway, or common area. See Figure 1.

Street Setbacks:

For Public Work Stands installed perpendicular to the street, a 60" setback is the minimum. For Public Work Stands running parallel to the street, a 96" setback is recommended.

Floor pump location:

Floor pump should be mounted inline with the Public Work Stands mounting flange 6" away. See Figure 1.

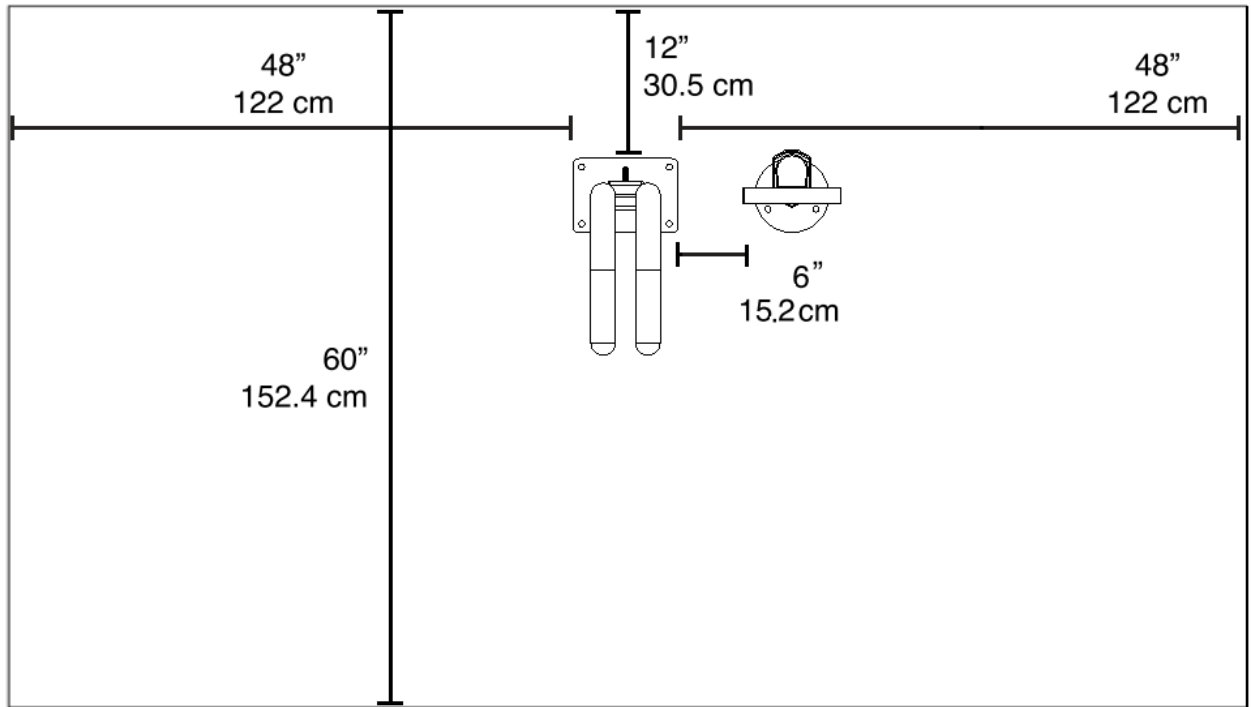


Figure 1: Setbacks

Typical Tools Needed for Installation

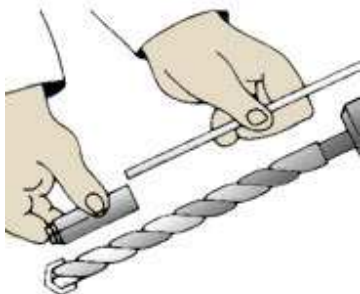
Tape Measure
½" Masonry Drill Bit Drill (Hammer drill recommended)
Hammer
Anchor Set Tool (included)
Triple Slot Nut Driver (included)
3/8" drive ratchet
Marker or Pencil
SAE hex key set
Level

Installation

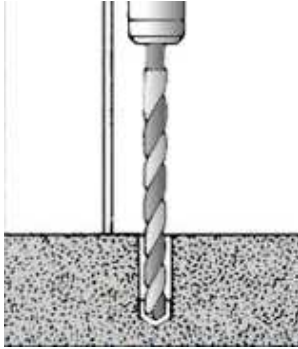
1. Place the repair stand and pump in the desired location (see setbacks). Use a marker or pencil to outline the holes of the flange onto the base material. We recommend checking the hole locations after each new anchor is placed. Ensure the holes are at least 6" away from any cracks in the base material.
2. The drop in anchor is a female anchor designed for use in solid concrete only and can't be used in brick or block base material. The anchor size is designated by the inside diameter of the anchor. The Bike Fixtation Public Work Stand and Floor Pump comes with 3/8"-16 anchors. The diameter of the hole to be drilled is the same size as the outside diameter of the anchor which is ½".



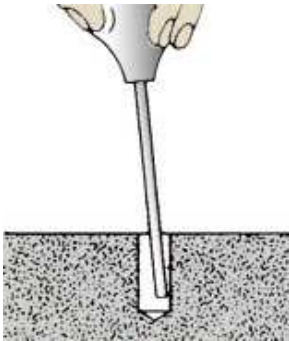
3. When fastening to solid concrete with a drop in anchor, a hole must be drilled into the base material. A hammer drill should be used as it will drill the best quality hole. Once the bit is chucked into the hammer drill, the depth of the hole to be drilled can easily be set by using the depth gauge on the drill or by wrapping the bit with tape at the required depth. We recommend a drill depth of 1-5/8" deep so that the anchor just sets down flush with the surface.



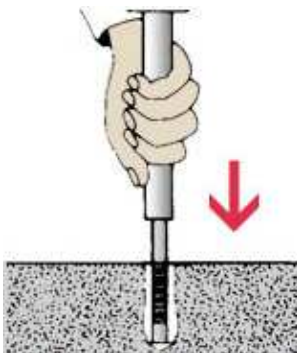
4. Before starting to drill the hole, it is important that eye and ear protection are used. Make sure the hammer drill is in the hammer mode and start drilling your hole. Continue drilling until the tape on the bit or the drill gauge meets the base material- this means that the required depth has been reached.



5. Before proceeding with installation, the hole must be cleaned of all concrete dust to ensure proper fastening. Use a wire brush, a vacuum or compressed air to clean out the hole completely.



6. Next, insert the drop in anchor with the open side up. Drop the anchor into the hole. Tap lightly to get the anchor flush with the base material.
7. Now, take the setting tool and insert it into the anchor. Strike the setting tool with the hammer until the lip of the anchor touches the lip of the setting tool. This will ensure the anchor is properly set.



8. Place the stand over the 4 anchors. You will be using 2 studs/tamper resistant nuts and 2 hex bolts (opposite sides from each other). You will thread the studs into the anchors prior to installing the nuts. When tightening the special tamper resistant triple slot nuts, always set and first tighten the anchors using the standard nuts. Once the stand/pump is installed, replace two nuts from the bracket (opposite sides from each other) with the tamper resistant fastener. **DO NOT OVER-TIGHTEN** the tamper resistant nut.
9. Place the pump over the 3 anchors and follow the same steps as Step 8.
10. Check how level the stand and/or pump are and level with washers.
11. Install cabled tools using the tool lock plate. The center cable stop will rest between the tool lock plate grooves. Tighten lock plate using a triple lock nut. Ensure all tools are properly tethered.



12. Congrats! You're finished!